



Best Quality Machinery Teknik Co., Ltd-BQ Group

Address: Building 5, ABBY Nail, Tanning District, Changzhou City, Jiangsu Province, China Postcode: 213014

Best Quality Machinery Teknik Co., Ltd



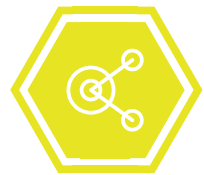
ENTERPRISE

企业目录

1	Enterprise directory 企业目录	02
2	corporate culture 企业文化	03
3	Automatic Drum Production Line 油桶整线	04
4	Team Introduction 团队介绍	27
5	Certifications 企业证书	28

CORPORATE CULTURE

企业文化



Vision

Set the industry benchmark



Mission

Participate in the development of industry standards



Spirit

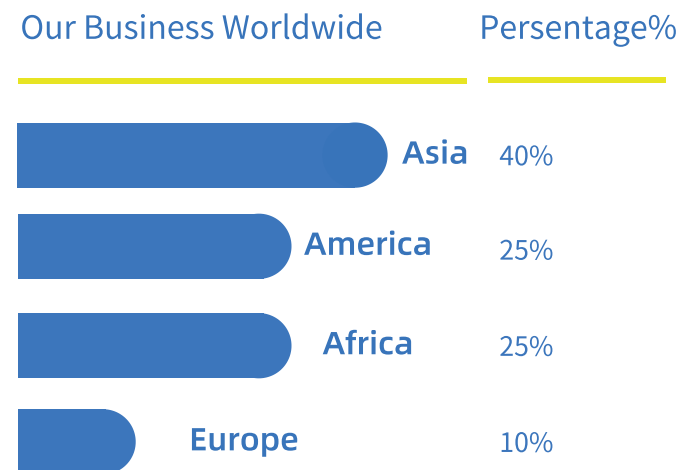
Provide the most excellent service



Slogan

Professionalism brings the future

Best Quality Machinery Teknik Co., Ltd
-BQ Group
Specializes in providing Turkey solutions for the energy industry. With a range of innovative products and engineering projects, we are proud to offer the following: Fully Automated Drum Production Line, Solar Photovoltaic Panels, Automated Packaging Lines, Energy Storage Projects etc.,
We are committed to delivering advanced technologies that contribute to a sustainable future. With our focus on automation, renewable energy, and energy storage, we strive to meet the evolving needs of the energy industry. Contact us today to learn more about how we can support your business.



Automatic Steel Drum Production Line

Fully Automated Drum Production Line: Our state-of-the-art technology ensures efficient and precise manufacturing of oil drums, reducing manual labor and increasing productivity.

Solar Photovoltaic Panels & PV System

Solar Photovoltaic Panels: We offer high-quality solar panels that harness the power of the sun to generate clean and renewable energy. Our panels are designed to maximize efficiency and durability.

Automated Filling, Assembly & Packaging Lines

Automated Packaging Lines: Our automated packaging solutions streamline the packaging process, ensuring speed, accuracy, and consistency. From product sorting to labeling, our systems improve efficiency and reduce costs.

Energy Storage Projects

Energy Storage Projects: We specialize in engineering and constructing storage facilities for various energy industries. Our expertise in designing and building gas storage tanks ensures safe and efficient storage of gases used in the energy sector.

Automatic Drum Production Line

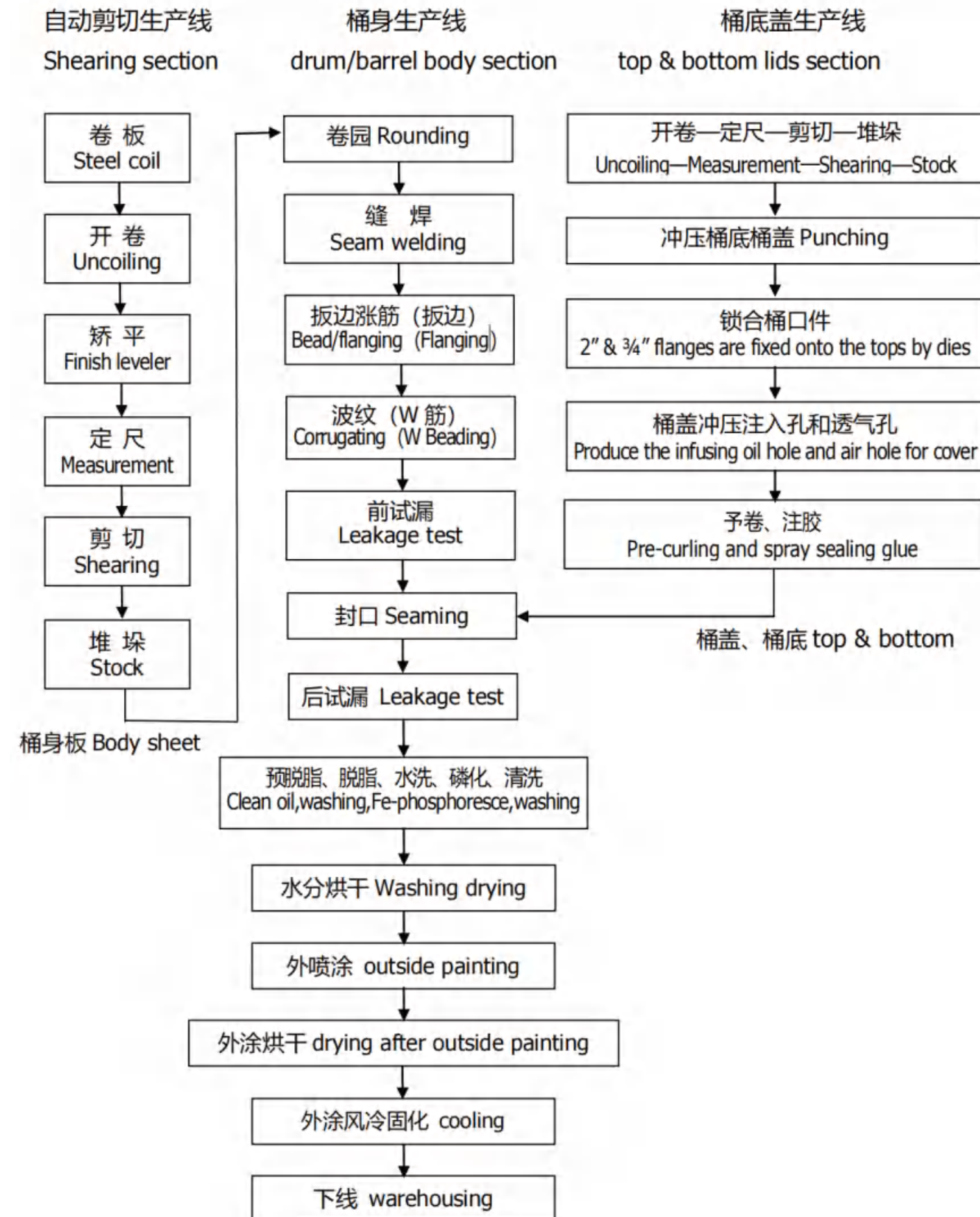
Welcome to Best Quality Machinery Teknik Co., Ltd a leading provider of advanced solutions for the energy industry. We take pride in our state-of-the-art fully automated drum production line, revolutionizing the manufacturing process for oil drums.

Our cutting-edge technology allows for seamless, efficient, and precise production of oil drums. With minimal human intervention, our automated system ensures consistent quality and increased productivity. From sheet metal cutting and forming to welding and painting, every step of the production process is meticulously controlled.

Key benefits of our fully automated drum production line include reduced labor costs, improved manufacturing speed, and enhanced product quality. By eliminating manual errors, we guarantee precision and uniformity across all our oil drums. We are committed to environmental sustainability, and our production line is designed to minimize waste and optimize resource utilization. Our innovative approach not only meets industry standards but also sets new benchmarks for efficiency and sustainability.

Choose use for your oil drum production needs and experience the advantages of our fully automated system. Contact us today to learn more about how our advanced technology can streamline your manufacturing process and boost your business's productivity and profitability.

Production Flow



Automatic Drum Production Line

Successful Cases



Successful Cases



Automatic Drum Production Line

Introduction of Major Machines

Decoiler, straightening, blanking line



Roll weight: ≥ 15 Tons;
 Shearing width: 600-1250mm;
 Production capacity: ≥ 45 m/min;
 Applicable material: SPCC galvanized steel sheet, cold-rolled steel sheet;
 Thickness: 0.5-1.5mm;
 Accuracy: Length 1800 ± 0.5 mm, diagonal ± 1.0 mm;
 Steel coil inner diameter: $\Phi 508-610$ mm;

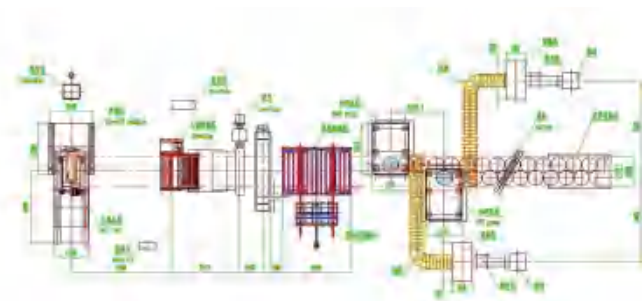
Loading capacity of automatic feeding trolley: ≥ 15 tons;
 Loading capacity of lifting platform: ≥ 5 tons;

Single arm uncoiler:
 Reducer frequency conversion speed regulation, hydraulic drive, including auxiliary support and hydraulic pressing system;
 Inner size of tape coil: $\Phi 508-\Phi 610$;
 Drive motor power: 7.5KW;
 Stretch of the coiling cylinder: 250mm;
 Maximum load: 15T;
 Xuan angle cylinder liner: 700mm,
 Support cylinder row: 50mm;
 Equipment weight about: 3.2T;
 Power of hydraulic station: 4KW;
 Working pressure: 9MPa;

Leveling machine:
 Consists of 9 leveling rollers and two sizing rollers, the cutting is controlled by a coded servo motor

Length and accuracy; leveling adjustment is manually adjusted by the elevator;
 Straightening roller diameter: 150mm;
 Leveling accuracy: 2mm;
 Equipment power: 7.5KW;
 Equipment weight about: 3.5T;

High-speed shearing machine:
 Shearing machine specification: 3×1600 ;
 Shearing speed: 45m/min;
 Equipment power: 3KW;
 Equipment weight: about 2T;
 Cutting barrel material, PLC controls the cutting rhythm;



Automatic Drum Production Line

Introduction of Major Machines

Fully automatic barrel lid mouthpiece punching and locking production line



For top and bottom lid blanking, one machine capacity: 10sets/min (12pcs top lid/12pcs bottom lid)

Introducing 160-Ton punch press, designed to meet the demands of high-volume precision metal fabrication. This robust and versatile machine offers unparalleled power and efficiency, making it an ideal choice for a wide range of industrial applications.

With a compact yet sturdy frame, our 160-Ton punch press delivers exceptional force and accuracy. Its advanced hydraulic system ensures smooth and consistent operation, allowing for precise punching, forming, and bending of various materials, such as steel, aluminum, and stainless steel.

Total power of equipment: 15kw (including punch)

Mechanical appearance (maximum): (L×W×H)
8400×3500×2600

Total weight of the whole machine
(approximately): 14 tons

Fully automated production, labor saving, and high capacity



Automatic Drum Production Line

Introduction of Major Machines

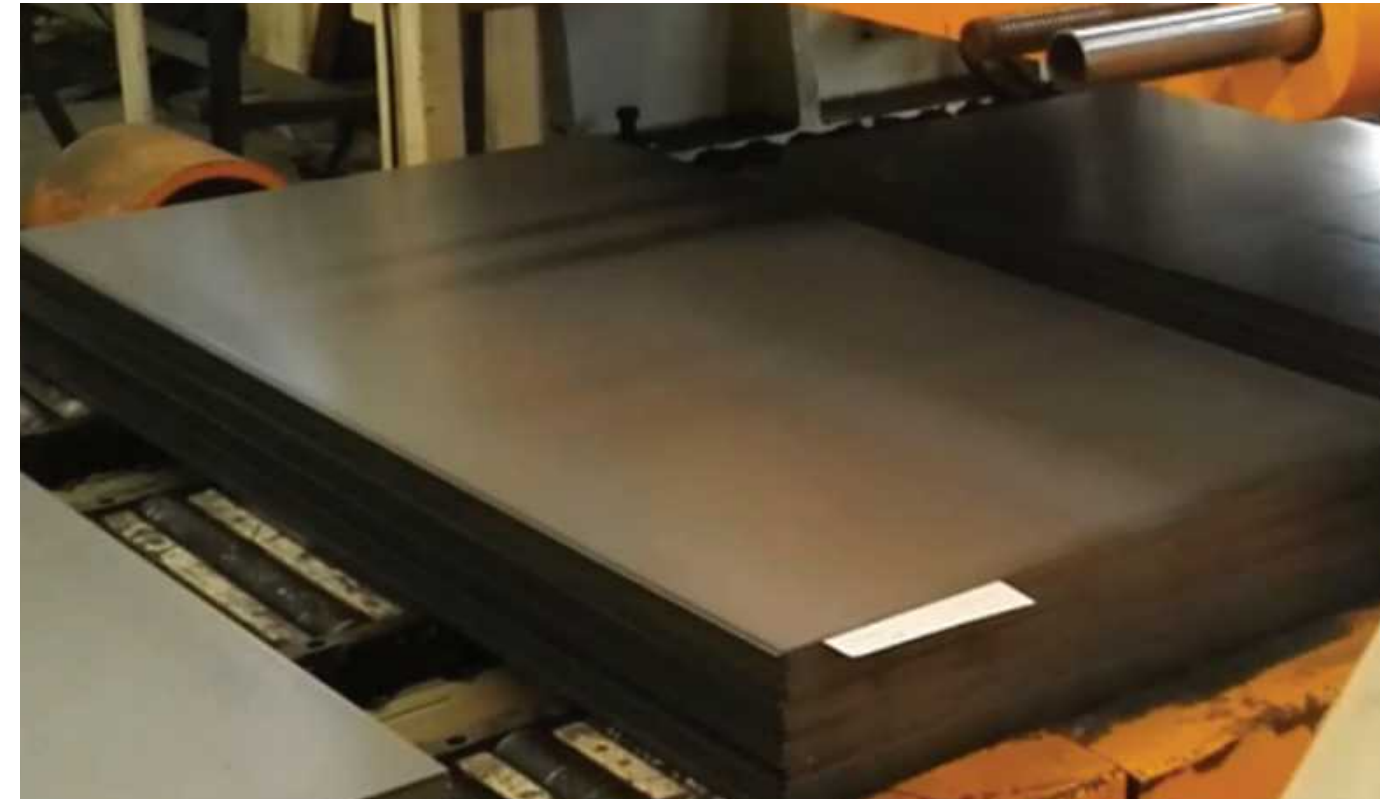
Automatic suction cup feeding machine



The steel plate stack is divided into the working area and the waiting area. The lifting of the steel plate stack in the working area adopts hydraulic automatic lifting
The separation of the steel plates adopts the automatic separation mechanism of the magnet and the automatic blowing of the compressed air to achieve the separation of the steel plates
Enter the seam welding machine (to avoid multiple sheets being adsorbed at the same time), the adsorption of the plates adopts vacuum generators imported from Japan, suction disk device. During normal operation, the suction cup sends the absorbed steel plate to the clamping feeding roller, and the feeding roller table automatically
Conveying the steel plate to the seam welder inlet



The main technical parameters
Mechanical speed: 8 pieces/min
Total power of equipment: 7.5kw
Maximum load: 5 tons
Mechanical appearance (maximum): (L×W×H)
4030×2000×1700
Total machine weight (approximately): 2 tons



Automatic Drum Production Line

Introduction of Major Machines

Automatic Drum Body Seam Welding Machine



The main technical parameters

1. Rated power: 262 KVA 380 V 50 Hz
2. Total power: 262KW
3. Welding speed: 12m/min
4. Rated productivity: 8 -10 pieces/min
5. Inner size of welding barrel: $\phi 560\sim\phi 571$ mm
6. Welding drum length: 900~1000 mm
7. Blank thickness: 0.9~1.2 mm
8. Compressed air pressure: 0.6 Mpa
9. Dimensions: 3800x6500x2200 mm
10. Total mass: 4800 kg



3. Process flow

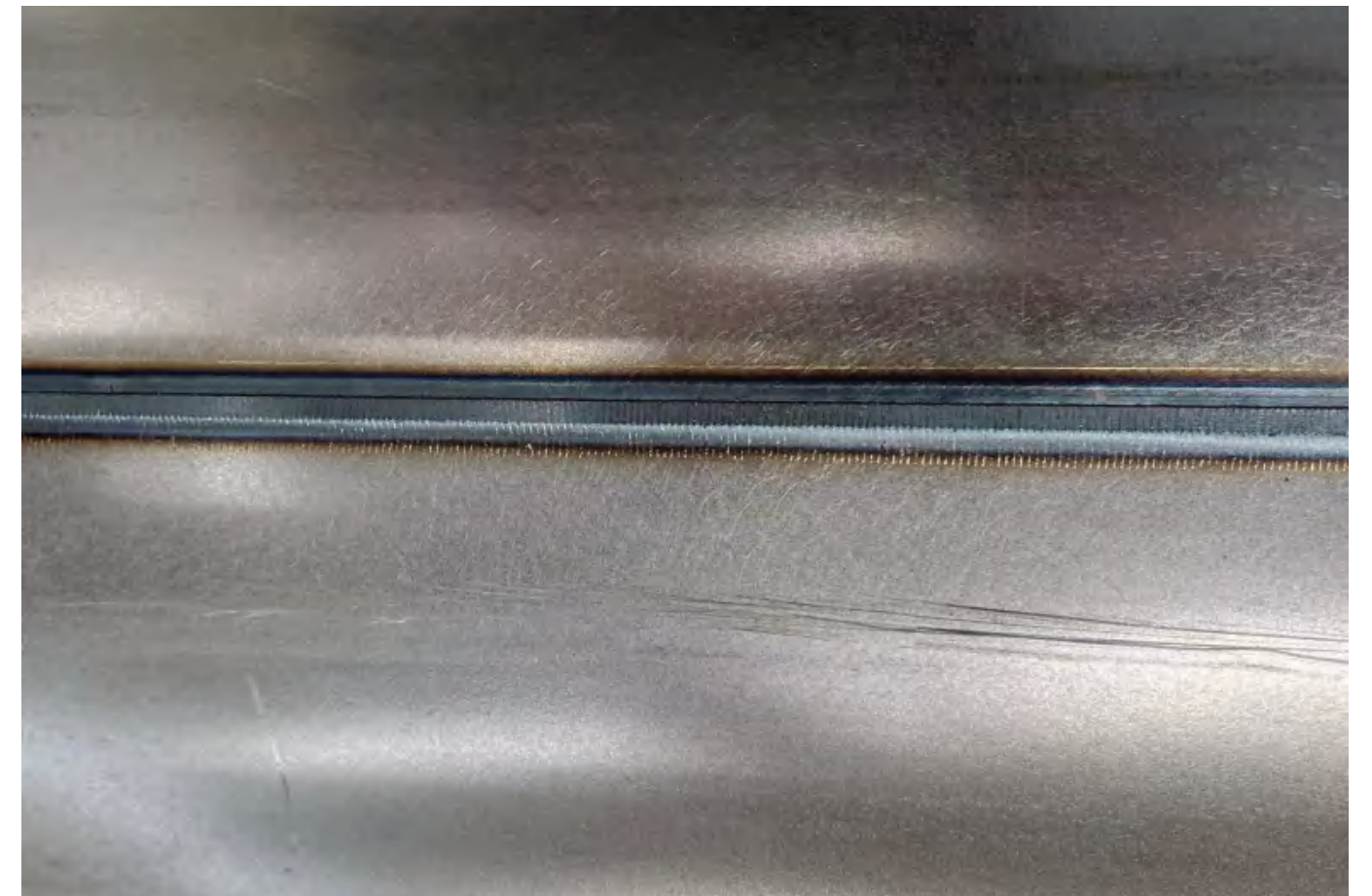
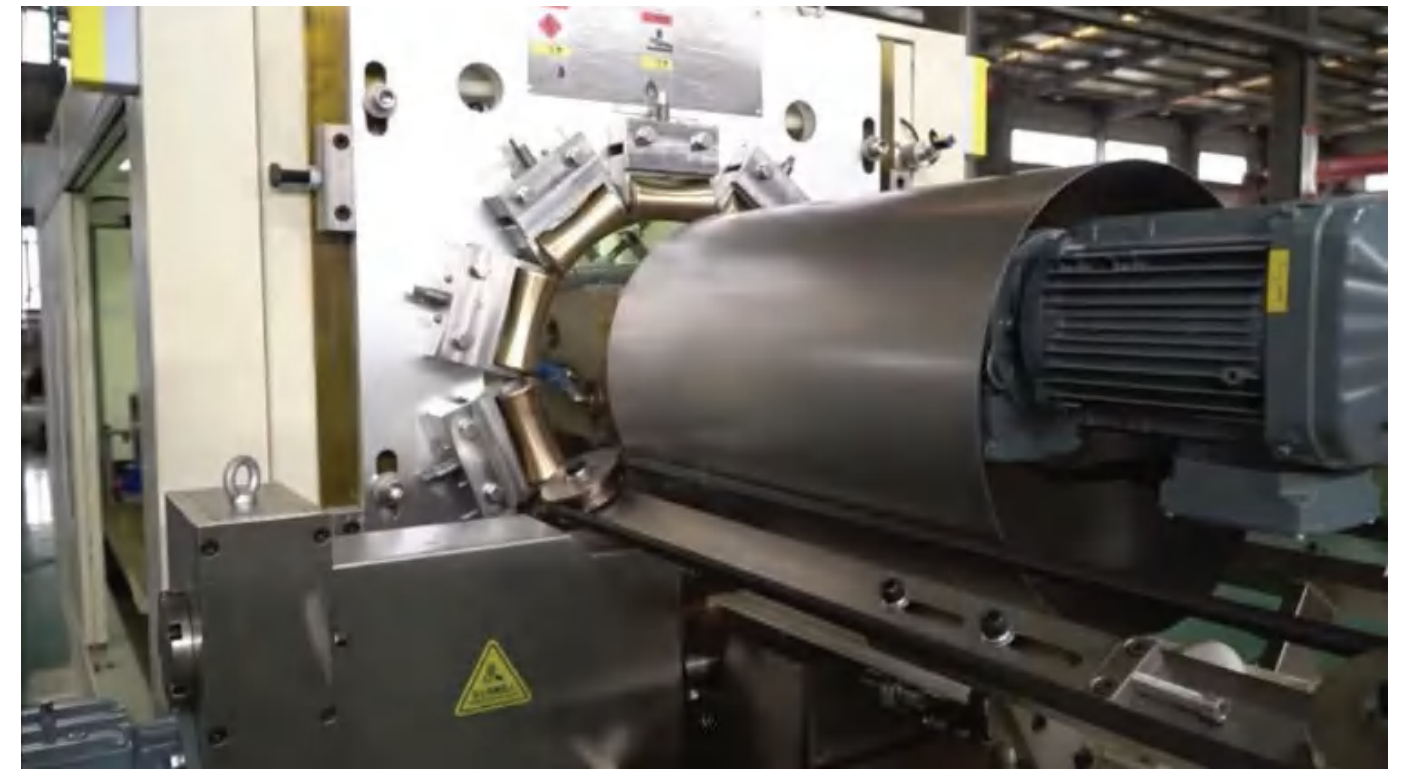
Start-feed-reel-push to welding position-weld-roll weld-unload
Material - the next cycle.

4. Product structure

The reel, welding and rolling flow of the steel drum is divided into feeding, reel, welding, rolling weld,

There are five steps and positions for unloading; the advancing direction of the feeding material is perpendicular to the roll forming axis; roll, welding, rolling

The axes of the parts at each step position of pressure welding seam and unloading are coaxial or parallel.



Automatic Drum Production Line

Introduction of Major Machines

Middle Process



Flange Machine

The barrel body after seam welding is automatically sent to the working center of the flanging machine, the barrel body is inserted into the forming plate, and is directly extruded by the forming plate moving back and forth. The whole action process is controlled by PLC; driven by hydraulic pressure. Power: 18.5KW.



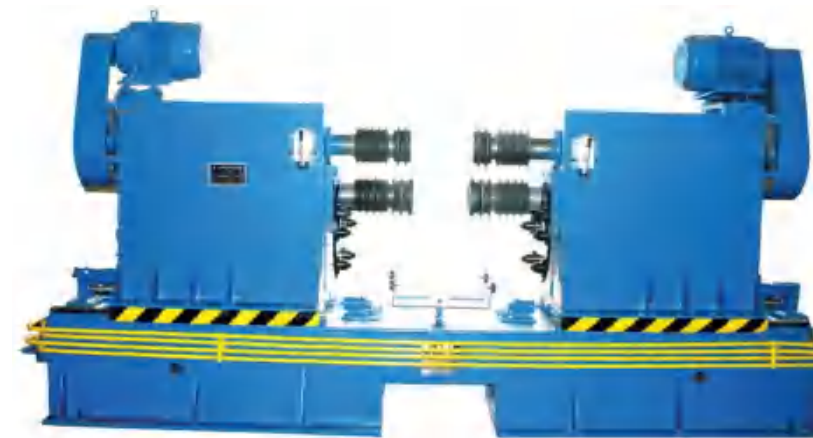
Expanding Machine

The barrel body after flanging is automatically sent to the bead expansion machine station along with the conveyor chain, the left and right spindle boxes enter, the bead expansion head is inserted into the barrel body, the piston rod of the bead expansion cylinder is stretched forward, and the inclined plane pushes 8 pieces of bead expansion modules outward along the radial direction. Move to complete the rib expansion process, the height of the rib expansion is 14 mm, which can be adjusted. The machine is controlled by PLC and driven by hydraulic pressure. Power: 15KW.

Automatic Drum Production Line

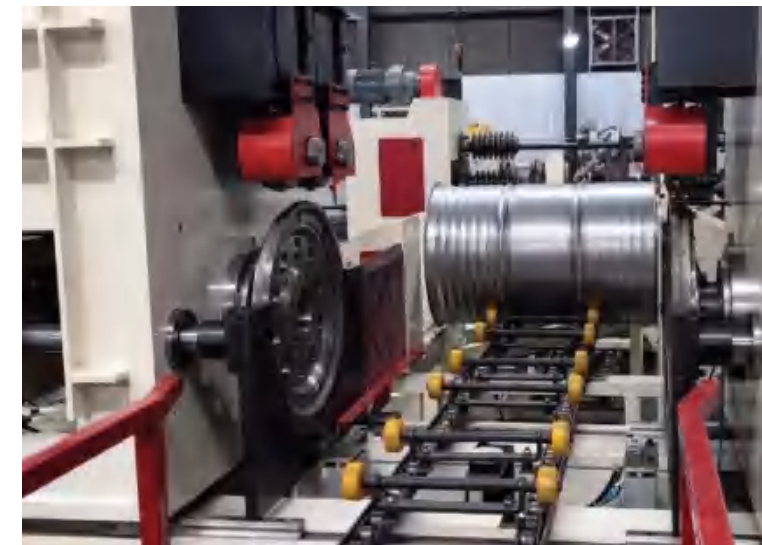
Introduction of Major Machines

Middle Process



W-Beading Machine

The barrel body after expanding is automatically sent to the working center of the corrugation machine along with the conveyor chain, and the corrugation is suppressed at both ends of the barrel body at the same time. The upper and lower corrugated pressing rollers extend into the inner and outer sides of the barrel body at the same time, the motor drives the upper pressing roller to rotate, the hydraulic cylinder drives the lower roller to rise, and the two rollers clamp the barrel body to rotate to complete the corrugation pressing. The machine is controlled by PLC and driven by hydraulic pressure. Power: 22KW.



Seaming Machine

The barrel body after corrugation is transported to the working center of the sealing machine with the automatic conveyor chain, and is automatically pressed and sealed. The sealing machine is independently driven by double motors, and the double spindles are rotated, frequency conversion brakes, and the structure is novel. The pressure wheel of the sealing machine is driven by a cam and adjusted by frequency conversion. Adjustment is extremely convenient, PLC control. Power: 50.5KW. Automatic feeding device for barrel bottom cover: one person puts the bottom and cover on the conveying device at the same time, and the bottom cover is automatically transported to both ends of the barrel body with the working rhythm.

Automatic Drum Production Line

Introduction of Major Machines

Painting Booth



Technical parameter:
Capacity: 4pcs/min
4 sets pray pump(Chongqing Changjiang)
13 sets spray nozzle(American Nordson)
4500*3400*2500mm painting booth
Stainless steel sink and paint pipe line
Edge curl and paint repair device



Three-jaw painting rotation clamping device
Total 13 sets spray guns, (bottom :4 sets spray guns,others are mist spray)
2 stations:
First station: 2 spray guns; in middle of drum body.
Second station: top cover :2 sets spray guns; Bottom: 2 sets spray guns; Top drum body:3 sets; bottom drum body :3sets there are 2 sets trimming guns

Automatic Drum Production Line

Introduction of Major Machines

Dry Oven



Technical parameter:
Cooling room length: 6 meters
Cooling time: 2-3 mins
Drying Oven: with 2 burners
Oven length: about 30 meters
Diameter range: 560/571mm
Length range: 900-1025mm
Material thickness range: 0.7-1.2mm
Natural gas consumption: 95 m³ / h, LPG consumption: 80Kg/ h
There are 4 fans in the drying oven, 4 small fans (exhaust) in the cooling area, and 2 large fans for cooling.



Technical parameter:
Cooling room length: 6 meters
Cooling time: 2-3 mins
Drying Oven: with 2 burners
Oven length: about 30 meters
Diameter range: 560/571mm
Length range: 900-1025mm
Material thickness range: 0.7-1.2mm
Natural gas consumption: 95 m³ / h, LPG consumption: 80Kg/ h
There are 4 fans in the drying oven, 4 small fans (exhaust) in the cooling area, and 2 large fans for cooling.



Installation, Commissioning & Site Engineering Service

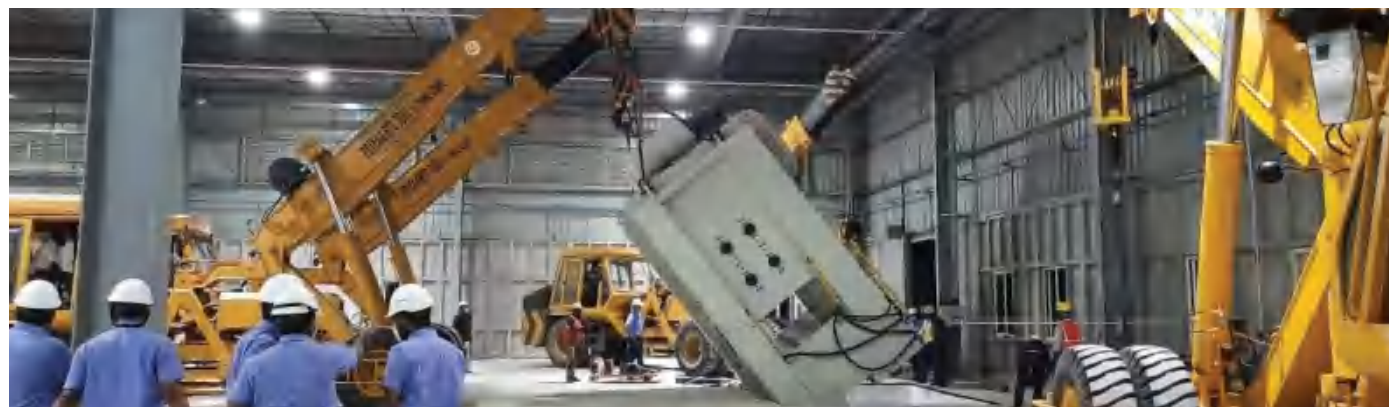
安装、调试和现场工程服务

We not only provide the entire production line, but also provide comprehensive services and overall product solutions. From the layout planning of the whole plant equipment, the design of the production process, the manufacture of products, the improvement of production capacity, to the maintenance of the final equipment and the grasp of future industry trends, we will provide you with the best service and the most perfect solution. Program.

Plant Layout Design & Visiting



Plant Layout Confirming & Construction



International Certifications Brief





WhatsApp



Best Quality Machinery Teknik Co., Ltd-BQ Group

Address: Building 5, ABBY Nail, Tanning District, Changzhou City, Jiangsu
Province, China Postcode: 213014

E-mail:director@bqmachinery.com
salesdepartment@bqmachinery.com